



TRUCKMATE

THE NEXT GENERATION PORTABLE AXLE SCALE

'TRUCKMATE' is the lowest profile weigh pad we have ever offered. Large weighing surface, and extremely low profile (from 18mm high). The excellent accuracy is due to the twenty independent loadcells under the top plate.



Wireless Truckmate connecting up to 8 pads
Range up to 25m



Rated Capacity:	10t, 20t or 40t (500kg min weight req.)
Type:	Ultra Slimline Weighpad
Static Accuracy:	Approx. 0.5% - 1% or better
Dynamic Mode:	Approx. 3 - 5% or better up to 5km/h
Rated overload:	120%
Temperature	-20°C ~ +60°C
Composition:	Lightweight, high strength
Pad Size:	From 765mm x 470mm From 950mm x 550mm Customized sizes available
Pad Weight:	From 18kg
Approx. Height:	From 18mm

Note: Levelling mats may be required for varying vehicle configuration

FEATURES:

- Extremely Slimline
- User friendly
- Portable
- Fast set up - approx. 10 mins
- Splashproof
- Accurate, Robust & Reliable
- Built in battery with external charger
- Pads can be recessed into ground or used with our frames
- PC compatible / memory download

“Reduce the Risk of Overloading Penalties”

“TRUCKMATE” The lowest profile weigh pad we have ever offered is now available with a WIRELESS version.

TRUCKMATE

Digital readout - built-in printer/Truckmate in holding frame
Digital readout controller/printer includes - operator ID, truck/reg no, axle weight, total weight, time/date & other features.

Case Dimensions: 430 x 310 x 150mm (H)

Carrying Weight: Approx. 6.5kg

Temperature -20°C ~ +60°C

Powered by 12v DC charger. Battery life approx. 1 week with overnight recharge via 240v adaptor/charger.
Controller/printer includes robust handy carry case with 3 spare paper rolls & 1 ink cartridge.

24/01/2012 09:12:18
Vehicle Rego: UDQ744
Total Weight: 40220kg

Axle: 04	09:12:08	15010kg
Axle: 03	09:11:55	10200kg
Axle: 02	09:11:46	10010kg
Axle: 01	09:11:28	5000kg

Printout sample



Truckmate in holding frame



Digital readout - built-in printer

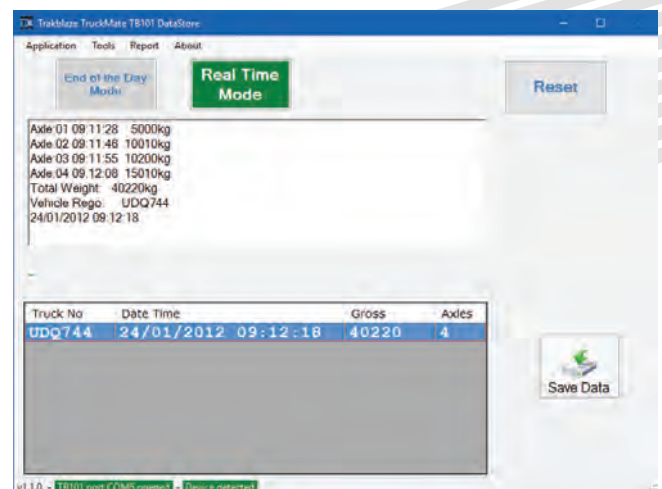


FEATURES

- Calibration up to 5 points for improved accuracy and linearity
- Connect up to 8 pads
- Built in battery with external charger
- Battery life indicator
- Signal strength indicator
- User friendly
- Extremely portable & slimline
- Fast set up - approx. 10 mins
- Splashproof
- Accurate, Robust & Reliable

Laptop connectivity allows weighing data to be transferred to a laptop for reporting purposes.

- RS232 output to PC
- Easy to use PC software
- Real Time Mode or End of the Day Mode
- Database storage of weighing data
- Spreadsheet reports



MINING, RAIL & ROAD WEIGHING SYSTEMS
85 Years of Innovation

Trakblaze Global

5 Mareno Road, Tullamarine, Victoria, Australia, 3043
Tel: +61 3 9318 9277

Email: info@trakblaze.com Web: www.trakblaze.com